



Crusader Connection

3825 Dixie Highway | Elsmere, KY 41018 | 859-342-2551
sthenryschool.net

[SHCS Website](#)

[School FB Page](#)

[Parent FB Page](#)

March 3, 2023

2022-2023 School Calendar

Good afternoon,

Hopefully you were able to catch one of the middle school performances of Cinderella last weekend. Our children did a great job! And they're already talking about next year's performance.

The end of the third quarter is coming up next Friday, March 10. It's hard to believe that the fourth quarter is right around the corner, bringing warm weather and longer days. Teachers are making sure grades are up-to-date and working on end of quarter assignments and projects.

The 2023-24 school year calendar has been submitted to the Diocese for final approval. As soon as we have that approval, the calendar will be shared. A couple dates that will probably remain are that we are planning to begin the year on Monday, August 14 and our last day will be on Friday, May 24.

Have a great weekend.

St. Henry, pray for us!

School News



Cinderella, Jr.

St. Henry middle school student's performance of Cinderella, Jr. at the Drees Homes Auditorium on the campus of St. Henry District High School last weekend was a great success. Tryouts and rehearsals for the production began in November. Students could participate in the play by being members of the cast or the set and technical Cru. Over 700 tickets were sold for the two performances. The play was directed by Ryann Scott with help from Shannon Wilson and parent volunteers Elaine Stich and Stacie Jankowski.

Congratulations to our archery team! They have advanced to the state tournament in Louisville on March 17. Way to shoot, Crusaders!

PTO News

From Our PTO

- Catch up on the last PTO meeting [here](#).

Athletic Boosters

[Click here for our Boosters' Newsletter](#)



A WIRED FAMILY
EMPOWERING SCHOOLS & FAMILIES

SOCIAL MEDIA

& The Adolescent Digital Tribe:

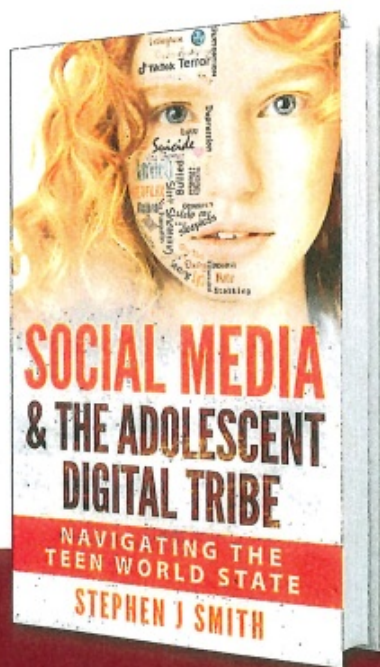
Navigating the Teen World State

The Diocese of Covington Safe Environment Office is excited to sponsor Mr. Stephen J. Smith for two presentations for those in our community. If you have children in your life, you **NEED** to hear his message!

Presentations are **FREE** and require **NO** reservations!

Please come and bring friends and relatives.

This is an **ADULT ONLY** presentation!



February 27, 2023
St. Henry District High School
3755 Scheben Drive
Erlanger, KY 41018
7:00PM- 9:00 PM

March 7, 2023
Bishop Brossart High School
4 Grove Street
Alexandria, KY 41001
7:00PM- 9:00 PM

By Stephen J Smith



Soccer and a Broken Reservoir

In the Dry Corridor of Honduras, climate change causes persistent drought, making farming nearly impossible. With support from Catholic Relief Services, Rony, a farmer, repaired an old reservoir and installed a new irrigation system to improve his harvests. Now Rony can send his son to a soccer academy to pursue his dream of becoming a professional player. How can you work like Rony to support others' needs and dreams? Visit

crsricebowl.org to learn more. Please continue to add to your CRS Rice Bowl this week!

WHAT'S ON YOUR HEART? COMPLETE THE DISCIPLE MAKER INDEX

CLICK HERE
February 22 — March 27



The *Disciple Maker Index (DMI)* is open and we need to hear from you! Complete the 10-to-15-minute survey as soon as possible in one of the following ways:

1. **Online:** Go to <https://covidio.org/withoneheart/> and select your parish. ***Even if you are not Catholic, we would like for you to complete a survey. You can select St. Henry as your parish.***
2. **Paper:** Obtain a copy from the school office, entrances to church, or by contacting the parish office, 859-727-2035. Return the completed survey in the boxes at the entrances to church or in an envelope in the school office.


The DMI will only be available February 22 through March 27. As part of the diocesan With One Heart initiative, the survey will ask you to reflect on your own spiritual growth and on our parish's efforts to help you become the best disciple you can be. The information gathered will be used to plan for the future so we can become a more faith-filled, vibrant community. The greater the participation, the more reliable the information will be for effective decision-making. All responses will be confidential; the parish will only receive information about the community as a whole. Results will be shared with the parish in late spring/early summer.

Lent is the perfect time to pray and reflect on where we are spiritually and to work toward becoming better disciples. Taking the DMI is a great way to start! Thanks for your help with this important request!

Cafeteria News

Cafeteria volunteers needed! If you are interested in volunteering, please email Jandrews@sthenrynky.com to set up a date. All volunteers must be Virtus compliant.

CLICK IMAGE FOR A PRINTABLE PDF!

<div>  <h1>MARCH 2023</h1> <h2>Elementary Lunch Menu</h2> </div>					
MONDAY	TUESDAY	WEDNESDAY	THURSDAY	FRIDAY	Alternate Meal Options Milk and choice of daily fruits and/or vegetables offered with all alternate meal options* PB&J Grab & Go PB&J Uncrustables, cheese stick, Goldfish crackers Yogurt Grab & Go Yoplait yogurt cup, cheese stick, Goldfish crackers, and pretzels Extras NOT included in the lunch: Milk: 50¢ Small juice: 50¢ Switch drink: 85¢ Water: \$1.30 Bagged snacks: 80¢ Rice Krispie Treat: 80¢ Muffins: \$1.00 Cereal bars/Poptarts: \$1.00 <i>Meat options are not offered on Fridays</i> Menu subject to change by product availability This institution is an equal opportunity employer
27 Fiesta Pizza OR Chicken/Cheese Quesadilla Salsa Cup, Sour Cream Refried Beans Corn Peach Cups Frozen Sidekicks Milk	28 Chicken Tenders OR Fish Sticks Tater Tots Green Beans Mini Biscuit Pear Cups Fresh or Dried Fruit Milk	1 Spaghetti with Meat Sauce OR Chicken Alfredo Garlic Breadstick Glazed Carrots Garden Salads Pineapple Tidbits Strawberry or Mixed Berry Cups Milk	2 Coriotti Pancakes Sausage Patties Syrup Cup Smile Fries Veggie Boats with Dip Baked Apples Fresh or Dried Fruit Milk	3 Cheesy Flatbread Tomato Soup, Pickle Spear Garden Salads Oyster Crackers Applesauce Strawberry or Mixed Berry Cups Milk	
6 Chicken Patty Sandwich OR Soft Taco Lettuce, Tomato, Onion, Pickles Mac and Cheese, Baked Beans Carrots and Celery with Dip Peach Cups Frozen Sidekicks Milk	7 Beef Nachos OR Soft Taco Shredded Cheese, Sour Cream Lettuce, Tomato, Onion, Salsa Black Beans, Corn Pear Cups Fresh or Dried Fruit Milk	8 Chicken Drumstick with Roll OR Turkey/Ramen and Cheese Sub Lettuce, Tomato, Onion, Pickles Mashed Potatoes and Gravy Green Beans Pineapple Tidbits Strawberry or Mixed Berry Cups Milk	9 Hot Dog OR Cheese Coney Shredded Cheese, Diced Onions Crispy Cut Fries Veggie Boats with Dip Mandarin Oranges Fresh or Dried Fruit Milk	10 Cheese Bites OR Pizza Crunchers Marinara Sauce Cup Steamed Broccoli Garden Salads Applesauce Strawberry or Mixed Berry Cups Milk	
13 Beef and Cheddar Sandwich OR Pulled Pork BBQ Sandwich Curly Fries Green Beans Celery with Dip Peach Cups Frozen Sidekicks Milk	14 Chicken Nuggets Mac and Cheese Corn, Baked Beans Pickle Spears Mini Biscuit Pear Cups Fresh or Dried Fruit Milk	15 Strawberry Cream Bagels OR Mini Cinnamon Rolls Scrambled Eggs Smile Fries Veggie Boats with Dip Baked Apples Strawberry or Mixed Berry Cups Milk	16 Milk Tangerine Chicken OR Teriyaki Beef Brown Rice, Steamed Broccoli Carrots with Dip Mandarin Oranges Fresh or Dried Fruit Fortune Cookies Milk	17 NO SCHOOL	
20 Mini Corn Dogs Mac and Cheese Pickle Spear Green Beans Celery with Dip Peach Cups Frozen Sidekicks Milk	21 Hamburger OR Cheeseburger Lettuce, Tomato, Onion, Pickles Crispy Cut Fries Baked Beans Pear Cups Fresh or Dried Fruit Milk	22 3 or 4 Way Chili Spaghetti Shredded Cheese, Diced Onions Oyster Crackers Kidney Beans Glazed Carrots Pineapple Tidbits Strawberry or Mixed Berry Cups Milk	23 Cheese Pizza OR Peppersi Pizza Steamed Broccoli Garden Salads Mandarin Oranges Fresh or Dried Fruit Milk	24 Mini French Toast OR Mini Waffles Syrup Cup, Scrambled Eggs Smile Fries Veggie Boats with Dip Baked Apples Strawberry or Mixed Berry Cups Milk	
27 Fiesta Pizza OR Cheese Quesadilla Salsa Cup, Sour Cream Refried Beans Corn Peach Cups Frozen Sidekicks Milk	28 Chicken Tenders OR Fish Sticks Tater Tots Green Beans Mini Biscuit Pear Cups Fresh or Dried Fruit Milk	29 Spaghetti with Meat Sauce OR Chicken Alfredo Garlic Breadstick Glazed Carrots Garden Salads Pineapple Tidbits Strawberry or Mixed Berry Cups Milk	30 Coriotti Pancakes Sausage Patties Syrup Cup Smile Fries Veggie Boats with Dip Baked Apples Fresh or Dried Fruit Milk	31 Grilled Cheese OR Cheesy Flatbread Tomato Soup, Pickle Spear Garden Salads Oyster Crackers Applesauce Strawberry or Mixed Berry Cups Milk	

Order Text Here



Weekly and monthly volunteers are needed to help at bingo. Training is provided for all positions, along with dinner, drinks, and laughter. For more details, contact Ryan Bihl, watermobihl@yahoo.com, or Jamie Powers, jamielpowers00@gmail.com.

No one under the age 18 is permitted in the cafeteria during our bingo sessions.

8th Grade	7th Grade	6th Grade	5th Grade	4th Grade
April 3	April 10	April 17	April 24	May 1
3rd Grade	2nd Grade	1st Grade	Kindergarten	Preschool
February 27 May 8	March 6 May 15	March 13 May 22	March 20 May 29	March 27 June 5

Bingo Volunteer Sign up



MONDAY NIGHT BINGO

Lucky in Kentucky!

MARCH 6 JACKPOTS

Triple Crown Derby: \$2,600
Hog Wild: \$1,100

DOORS OPEN: 4:45 PM
JITNEYS BEGIN: 6:45 PM
REGULAR GAMES: 7:15 PM

MARCH 13
Dress in green and be seen!

MARCH 27
Play Big Boss for a chance to win a \$300 Kroger Gift Card

3825 Dixie Highway | Elsmere KY | 859-342-2551

KY License #287

DINE TO
Donate



3159 Dixie Highway | Erlanger, KY

Tuesday all day long!

DINE IN \ CARRY OUT \ DRIVE THROUGH

Be sure to mention St. Henry when ordering! Thank you for your support!

Lacrosse Camp Registration

We are excited to (finally!) open registration for the K-2 Spring Lacrosse league!! Please use this link to register [Lacrosse Camp Registration](#).

The league will be hosted at St. Timothy School and will run for a total of six weeks on Friday evening, beginning March 24. The first two weeks (March 24 and 31) will be a group practice/camp that will introduce rules and basic skills for each level. Games will begin Friday April 14 and conclude Friday May 19. There will be two divisions to choose from:

- **Soft Stick League** – (K-2 girls), (K-1 boys) The games will be non-contact and played on a smaller field with "soft sticks."
- **2nd Grade In-House League** - This league will be played in full pads with modified checking rules. It is open to all 2nd grade boys and 1st grade boys that opt to play with full pads. Helmet, chest protector, gloves, elbow pads, and standard 42" lacrosse stick are required. We will have a limited number of sticks available to borrow.



Anyone who volunteers in our school or parish must be VIRTUS trained and compliant. **For current volunteers, the February bulletin is due March 7.**

If you are interested in volunteering in our school or parish, there are many opportunities to attend the Protecting God's Children training; visit VIRTUS.org > drop down to select Covington, KY (Diocese) > select a session to attend and register.

If you have questions or need additional information, reach out to our VIRTUS® coordinator, Kristina Goodridge, 859-342-2551, or email kgoodridge@sthenrynky.com.

Anyone who has experienced sexual misconduct by a cleric, employee, religious, or volunteer of the Diocese of Covington is asked to contact Julie Feinauer, Diocesan Victims Assistance Coordinator, 859-392-1515. Professional assistance and pastoral support will be provided in confidentiality and with respect.

Place	Date	Time
Thomas More University Crestview Hills	Thursday, March 16	6:30 PM
Diocese of Covington Curia Covington	Tuesday, March 28	9:00 AM
Diocese of Covington Curia Covington	Wednesday, March 29	6:00 PM
Catholic Charities Latonia	Wednesday, April 26	1:00 PM

EARLY DETECTION SAVES LIVES

15 MINUTES COULD SAVE YOUR LIFE

Saint Henry Catholic School

3825 Dixie Highway

Erlanger, Ky 41018

Tuesday, March 21

2:00 p.m. - 4:00 p.m.



The St. Elizabeth mobile mammography unit offers state-of-the-art 2-D and 3-D mammography screening. It's quick, easy and covered by most insurance (including Medicare and Medicaid), if you are:

- Age 35 to 40: Baseline Screening
- 40 and Over: Annual Screening

Financial assistance is available to those who qualify.

REGISTER AT (859) 655-7400



*Fr. Bealer
Knights of
Columbus*



Every Friday during Lent
Dine in or carry out available!

Lunch: 11:00 AM-2:00 PM

Dinner: 4:30-8:00 PM

859-342-6643

605 LYTLE AVENUE | ELSMERE

**JOIN US EACH FRIDAY
DURING LENT**



ADULT & KID DINNERS INCLUDE 2 SIDES
DRINKS/BEER • DESSERTS AVAILABLE FOR A DONATION

Bob Lee Special (Baked Tilapia & 4 Shrimp)	\$13
Shrimp Dinner (8 Shrimp)	\$13
Baked Tilapia Dinner	\$12
Cod Fish Dinner	\$10
Fish Sandwich ONLY (one Cod filet)	\$5
Kid's Fish Dinner	\$5
Cheese Pizza	\$2

Sides: Apple Sauce, Baked Potato,
Cole Slaw, French Fries, Green Beans,
Mac 'n Cheese, Tossed Salad



News from St. Henry Parish



Becoming Catholic: One Step Closer

Throughout the year, we have heard prayers for catechumens and candidates in the Prayer of the Faithful during Mass. We have been praying for our catechumens, Sarah Quinn and Del Brooks. After the first Sunday in Lent, they will no longer be called catechumens. From now on when you hear a prayer for the Elect, you will be praying for Sarah and Del. On the first Sunday of Lent, those participating in the Rite of Christian Initiation of Adults celebrate the Rite of Sending for Election in their parish and the Rite of Election with their bishop in his Cathedral. This can vary from diocese to diocese, but this is what is done in the Diocese of Covington.

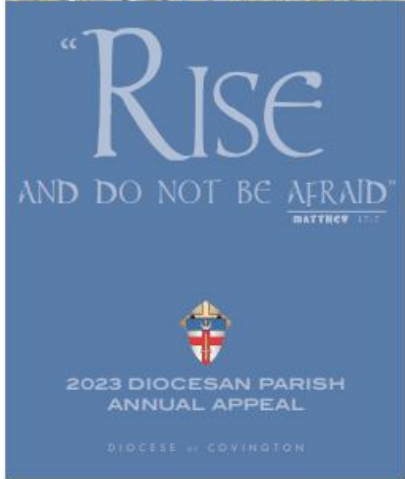
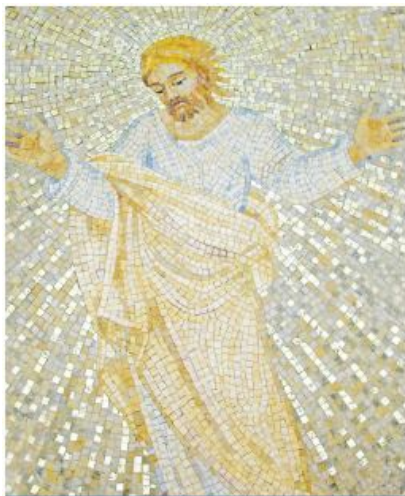
At the 9:30 AM Mass last weekend, Sarah and Del signed their names into the parish Book of the Elect with their sponsor's signature below. They spent the Saturday morning before in prayer and reflection where they were asked questions about their desire to live according to the teachings of the Church. Their signatures were a sign that they wanted to continue on the journey of becoming Catholic and they were found worthy to do so by their sponsor and RCIA team members. The Book of the Elect was then taken to the Cathedral and presented to Bishop Iffert for his signature ratifying their commitment expressed by their signature.

In his homily, Bishop Iffert pointed out that the Holy Spirit had been at work drawing them to the Sacraments of Baptism, Confirmation, and Holy Eucharist and thus, into the Body of Christ. They were chosen by God, elected, and found fit to enter the period of Purification and Enlightenment and ultimately the Sacrament of Baptism where they will be grafted to the vine, which is Jesus.

Janice Gabbard and Holly Vandergriff were also at the Cathedral. Since they had been baptized in another Christian faith community, they participated in the Rite known as the Call to Continuing Conversion and were found fit to complete their initiation through the Sacraments of Confirmation and Holy Eucharist at the Easter Vigil along with Sarah and Del.

Also at the 9:30 AM Mass last Sunday, the assembly was asked to affirm the testimony of the catechumens and candidates and to support them in faith, prayer, and example. This is a reminder to do that.

If you or anyone you know is interested in inquiring about the Catholic faith, now is the time to begin. We would like to set up an appointment to explain the process. The phone number is 859-727-2035.



2023 Diocesan Parish Annual Appeal

As we prepare to embark on the 2023 Diocesan Parish Annual Appeal, our local Church of the Diocese of Covington asks each parish to announce a special "rebate project" — a project that will utilize the overage funds *collected* over and above our annual goal. (Remember, "collected" is different than "pledged"!) After much thought, we have decided to do something that sounds very "surface"- oriented, but in fact has a lot of deep symbolic meaning: The re-surfacing of our church/school parking lot.

The parking lot serves the entire parish, both church and school.

St. Henry Catholic School is the largest single ministry of St. Henry Catholic Parish — but it is, indeed, a ministry of St. Henry Catholic Parish. There is sometimes a temptation to believe that the church and school operate separately, or even worse, are at odds with each other. This simply is not true. It is impossible to be true — we are one entity. It's good to remember that the parish *heavily* subsidizes the school from our offertory and provides a great deal of maintenance for the school. The school, of course, serves the parish by helping form our young people in the faith and is a tremendous outreach to those who send their children here from other parishes and those who are not of our faith.

Resurfacing the parking lot is something that the entire parish — both church and school — will benefit

from. It is something that all of us know needs to be done. We notice it every time we drive in or drive out of our property. It is something everyone can get behind, no matter if you're a school parent, or if you're an older person in the pew who has long since put their last child through the school — we all know we need a new parking lot. And it will be an important reminder that St. Henry Church and School are united in purpose, mission, and organization. And we all know how things like this can improve the "look" of an entire campus!

Depending on how much is raised through the rebate, please know that it may be some time before we can do the lot and it may happen in phases.

You may not know that the rebate monies raised are not "assessable" by the diocesan tax that is usually levied on donations. So all that money comes back to the parish/school. But first...it has to be donated and exceed our goal, which this year is \$67,000.00. That's where we all come in.

I encourage you to give to the Diocesan Parish Annual Appeal. We fully realize that economic challenges are real, especially at this time in history. Expenses are up everywhere, stocks are down, on and on. But we just ask that you see your gift as an investment. Please give sacrificially and recall that the more you give, the more rebate money will come back to us, and the closer we will get to funding our parking lot.

And as you'll be reminded, the DPAA enables many ministries on the diocesan and parish levels. Your contributions help many people, here in Elsmere, around our diocese, and beyond.

As you give, think of the many things you spend money on, and ask yourself, "Is giving to my church and/or school worth any less of my efforts or is it even worth more?"

God bless you for your generosity.

Fr. Joshua Lange

Pastor of St. Henry Catholic Parish

News from St. Henry District High School

ST. HENRY DISTRICT HIGH SCHOOL PRESENTS:

ALUMNI ART EXHIBITION

St. Henry Alumni are invited to submit artwork of any media to be displayed in the Wilson Family Art Gallery. The Hall of Fame induction event immediately follows the show. If you are interested in purchasing a ticket for the Hall of Fame event please go to www.shdhs.org

SUN

APRIL 2
2023

11- 130 PM

ADMISSION
IS
FREE



ARTWORK MAY NOT BE BIGGER THAN 32X40 AND ARTISTS ARE LIMITED TO THREE (3) PIECES. ALL 2D WORK NEEDS TO BE MATTED OR FRAMED FOR HANGING. 3D WORK IS ACCEPTED. ALL PIECES MUST BE DROPPED OFF AT THE SCHOOL OFFICE BETWEEN 8AM AND 3PM BY MARCH 27TH.

SHDHS IS NOT FINANCIALLY RESPONSIBLE FOR ANY DAMAGES WHILE THE SHOW IS ON DISPLAY.

AT SHDHS

3755 SCHEBEN DRIVE, ERLANGER KY 41018

859-525-0255
KVONHANDORF@SHDHS.ORG

St. Henry District High School Athletic Boosters are selling mulch and will deliver to your home within 25 miles of SHDHS. Dyed black, dyed brown, and natural mulch is available in 2 cubic feet bags (\$4.50/bag). All prices include free delivery and sales tax. Orders may be placed now through April 19; delivery starts on April 21. Order online, CruMulch.com. Thank you for your support!

Connect to SHDHS Online

Upcoming Events

- **March 4:** PTO Adult Prom, 7:00-11:00 PM
- **March 5:** Second Sunday of Lent
- **March 7:** Dine to Donate: Erlanger Skyline
- **March 8:** All faculty meeting, no after care
- **March 10:** End of Third Quarter
- **March 12:** Third Sunday of Lent
- **March 14:** PTO Meeting
- **March 17:** No school
- **March 19:** Fourth Sunday of Lent
- **March 21:** St. Elizabeth Mammogram Van at St. Henry
- **March 21:** Boosters Meeting
- **March 22:** Dine to Donate: El Ocho Loco
- **March 26:** Fifth Sunday of Lent
- **April 2:** Palm Sunday
- **April 4:** Dine to Donate: Skyline
- **April 6-16:** Easter Break
- **April 6:** Holy Thursday, Evening Mass of the Lord's Supper
- **April 7:** Good Friday of the Lord's Passion
- **April 8:** Holy Saturday
- **April 9:** Easter Sunday; Resurrection of the Lord



St. Barbara

4042 Turkeyfoot Road
Erlanger, KY 41018
859-371-3100
stbarbaraky.org

St. Henry

3813 Dixie Highway
Elsmere, KY 41018
859-727-2035
sthenrychurch.net

Cristo Rey

25 Cavalier Boulevard
Florence, KY 41042
859-538-1175
micristorey.com

Join us for Mass!

St. Barbara

Fr. John Sterling, Pastor
Chuck Melville, Deacon

Sunday Obligation Masses

4:30 PM Saturday
9:00 AM & 11:00 AM Sunday

Eucharistic Service

10:00 AM Monday

Daily Mass

10:00 AM Tuesday-Friday

St. Henry

Fr. Joshua Lange, Pastor
Fr. Aby Thampi, Parochial Vicar
Mike Lyman, Deacon

Sunday Obligation Masses

4:00 PM Saturday
7:30 AM, 9:30 AM, 11:30 AM
& 7:00 PM Sunday

Daily Mass

8:00 AM Monday-Saturday
8:30 AM **Friday only**

Cristo Rey

Fr. Allan Frederick, Pastor

Sunday Obligation Masses

6:00 PM Saturday
9:00 AM, 11:00 AM &
1:00 PM Sunday

Weekday Mass

6:00 PM Wednesday

Mission Statement

St. Henry Catholic School is a place where we learn, grow, and become Disciples of Christ by embracing the Gospel message. We will work toward our full potential each day in order to demonstrate our respect for the sacrifices made by the entire St. Henry community to ensure our success. We will remain *connected* to God and others, gain *confidence* in our academic, social, and physical abilities, and *contribute* to the community through service and leadership.

Connect With Us

St. Henry Catholic School

3825 Dixie Highway | Elsmere KY 41018

859.342.2551

Dennis Wolff

Visit Us Online

Dennis Wolff | 3825 Dixie Highway, Elsmere, KY 41018 8593422551

[Unsubscribe clageman@sthenrynky.com](mailto:clageman@sthenrynky.com)

[Update Profile](#) | [Constant Contact Data Notice](#)

Sent by bydwolff@sthenrynky.com powered by



Try email marketing for free today!