



## Crusader Connection

3825 Dixie Highway | Elsmere, KY 41018 | 859-342-2551  
sthenryschool.net

[SHCS Website](#)

[School FB Page](#)

[Parent FB Page](#)

### January 6, 2023

2022-2023 School Calendar

Good afternoon,

It's always fun when our children come back to the building after a break, and the same is true for the beginning of 2023. January is always a full month, so I want to highlight a few things included below:

We are beginning our registration and enrollment process for the 2023-24 school year, if you can believe that! Below is a letter that will be coming home Monday outlining the process.

Each year we honor folks that have made significant contributions to St. Henry by inducting them into our Hall of Fame. Last call to make nominations - see the form below.

We're excited to be exploring the opportunity to partner with a local childcare provider of different services - speech, OT and PT. See below for more information.

We can now have volunteers back in the cafeteria. See below to learn what to do.

The Lady Crusader Invitational is next week! We'll have our pep rally next Friday, which includes spirit crazy day when we vote for Mr. and Miss Crusader.

Enjoy your lunch and have a great weekend.

St. Henry, pray for us!

## School News



### **This Week in Pictures**

Our first graders learned about Epiphany this week! There is more information about celebrating Epiphany with your family later on in the newsletter!

---

### **New services opportunities**

With the beginning of a new calendar year, we are excited to announce that we have a new opportunity to improve upon our already outstanding services for educating your whole child here at St. Henry. We are exploring an opportunity to partner with Associates in Pediatric Therapy to provide additional therapy services to our children.

These services could include: [occupational therapy](#), [physical therapy](#) and / or additional [speech therapy](#) services for qualifying children.

Please read [this letter](#) to find out more.

If interested, please complete [this survey](#).

---



**ST. HENRY  
CATHOLIC  
SCHOOL**

*Connected, Confident, Contributing*

3825 Dixie Highway / Elmore, Kentucky 41018 / (859) 342-2551 / sthenryschool.net

Dear Families,

This letter is to inform you about the Registration to Enrollment process for the 2023-24 school year at St. Henry Catholic School. We encourage you to complete your registration as soon as possible. This helps with our internal planning processes and enrollment for new families.

Registration is a two step process: first, children must be registered online through Sycamore. Second, registration fees must be collected to secure the child's spot. A returning child's registration fee is \$50 (maximum of \$200 per family). A child is considered fully registered once s/he is included in Sycamore AND the registration fee has been collected.

Enrollment is complete when the parish receives a family's tuition agreement for the upcoming year. A child is enrolled officially once the completed tuition agreement is returned to the parish. More information about this is listed in the timeline below.

Registration for the 2023-24 school year will open on Friday, January 13, 2023. Families will be able to register online through their Sycamore account beginning that day. If you need access to your Sycamore account, contact Kristina Goodridge: kgoodridge@sthenrynky.com.

Below is an outline of the overall registration and enrollment process:

- Registration opens on Friday, January 13, 2023. Register early!
- Registration fees will increase (double) on March 1, 2023 for any family currently enrolled in 2022-23 but not yet enrolled in 2023-24.
- The FACTS application for tuition assistance will become available on March 1 and must be completed no later than April 29, 2023.
- Tuition rates for 2023-24 are planned to be announced after spring break.
- Tuition agreements for families will be sent out the week of May 30, 2023 from the parish office.
- Tuition agreements will need to be returned to the parish by June 30, 2023.
- Tuition payments will begin on July 19 or August 5, depending on the payment option selected.

We look forward to continuing the education journey for and with your family. If you have any questions, please contact the office: 859-342-2551. We're here to help and want this process to be as smooth and easy for you as possible.

St. Henry Pray for us!  
Dennis Wolff



**Catholic Diocese of Covington**

---

## **SHCS Crusader Hall of Fame Nominations Needed!**

Click on the image below to download the SHCS Crusader Hall of Fame Nomination form. Forms must be turned into the school office by Friday, January 13, 2023.



3825 Dixie Highway | Elsmere, Kentucky 41018 | 859-342-2551 | sthenryschool.net

### SHCS Crusader Hall of Fame Nomination

Catholic schools could not thrive without the generosity of parishioners, parents, teachers, and volunteers. St. Henry Catholic School is no exception. Since 1995, we have recognized someone who has made significant contributions to our school through the sharing of their time and talent by inducting them into the SHCS Crusader Hall of Fame during Catholic Schools Week, held the last week of January.

**Nominee Criteria:** This award goes to an individual, couple, or group that has made a significant contribution over a number of years to St. Henry outside of "normal" expectations. The award winner will have demonstrated commitment of time and talent to the betterment of those at St. Henry in a way that may not have been experienced had the award winner not been so gracious. Though the award is an "alumni" award, it may be given to a non-graduate of St. Henry because anyone deserving of the award has clearly demonstrated a deep commitment to and love for St. Henry and would thus be considered an honorary St. Henry alumnus.

**Nominee Name:** \_\_\_\_\_

**Nominee Parish:** \_\_\_\_\_ **How long?** \_\_\_\_\_

**Did the nominee attend St. Henry Catholic School?** \_\_\_\_ Yes \_\_\_\_ No If yes, when? \_\_\_\_\_

**Does/did the nominee have children/grandchildren attend St. Henry?** \_\_\_\_ Yes  
\_\_\_\_ No *If yes, please include name/s:* \_\_\_\_\_

\_\_\_\_\_  
\_\_\_\_\_



# Open House

SUNDAY,  
JANUARY 29  
1:00-3:00 PM  
STHENRYSCHOOL.NET



*We are many parts, we are all one body.*

1 Corinthians 12:12

DINE TO  
*Donate*



**Sunday, January 8**  
11:00 AM-9:30 PM  
2220 Grandview Drive  
Ft. Mitchell, Kentucky

## Cafeteria News

The cafeteria is now able to have our **volunteers** back. If you are interested in volunteering please email [Jandrews@sthenrynk.com](mailto:Jandrews@sthenrynk.com) to set up a date.

**CLICK ON IMAGE FOR A DOWNLOADABLE PDF!**



# JANUARY | 2023

**ST. HENRY CATHOLIC SCHOOL**

MONDAY	TUESDAY	WEDNESDAY	THURSDAY	FRIDAY	
2 NO SCHOOL	3 NO SCHOOL	4 Spaghetti with Meatballs OR Chicken Alfredo Garlic Breadstick Glazed Carrots Garden Salads Pineapple Tidbits Dried Cranberries or Cherries Milk	5 Cornetti Pancakes Sausage Patties Syrup Cup Smile Fries Veggie Boats with Dip Baked Apples Fresh Fruit Milk	6 Grilled Cheese OR Cheesy Flatbread Tomato Soup Garden Salads Oyster Crackers Applesauce Fresh Fruit Milk	<b>Alternate Meal Options*</b>  Milk and choices of daily fruits and/or vegetables offered with all alternate meal options.  <b>PB&amp;J Grab &amp; Go</b> PB&J Uncrustables, cheese stick, Goldfish crackers  <b>Yogurt Grab &amp; Go</b> Yoplait yogurt cup, cheese stick, Goldfish crackers, pretzels  <b>Extras NOT included in the lunch:</b> Milk: 50¢ Small juice: 50¢ Switch can: 85¢ Water: \$1.30 Bagged snacks: 80¢ Rice Krispie Treat: 80¢ Muffins: \$1.00  *Meat option not offered on Fridays*  *Menu subject to change by product availability*
9 Chicken Patty Sandwich OR Fish Sandwich Mac and Cheese Baked Beans Carrots and Celery with Dip Peach Cups Frozen Sidekicks Milk	10 Beef Nachos OR Turkey Soft Tacos Shredded Cheese, Sour Cream Salsa Cups Black Beans, Corn Peach Cups Fresh Fruit Milk	11 Chicken Drumstick with Roll OR Turkey/Ham and Cheese Sub Mashed Potatoes and Gravy Green Beans Strawberry or Mixed Berry Cups Fresh Fruit Milk	12 Hot Dog OR Cheese Coney Diced Onions, Shredded Cheese Crinkle Cut Fries Veggie Boats Mandarin Oranges Fresh Fruit Milk	13 Cheese Bites OR Pizza Crunchers Marinara Sauce Steamed Broccoli Garden Salads Applesauce Fresh Fruit Milk	
16 NO SCHOOL	17 Chicken Nuggets Mac and Cheese Corn Baked Beans Mini Biscuit Peach Cups Fresh Fruit Milk	18 Rotini with Meat Sauce and Garlic Breadstick OR Mini Cheese Calzones with Marinara Sauce Glazed Carrots, Garden Salads Pineapple Tidbits Dried Cranberries or Cherries Milk	19 Tangerine Chicken OR Teriyaki Beef Brown Rice, Steamed Broccoli Carrots with Dip Mandarin Oranges Fresh Fruit Fortune Cookies Milk	20 Mini Cinnamon Rolls OR Mini Cream Cheese Bagels Scrambled Eggs Smile Fries Veggie Boats with Dip Baked Apples Fresh Fruit Milk	
23 Mini Corn Dogs Mac and Cheese Green Beans Celery with Dip Peach Cups Frozen Sidekicks Milk	24 Hamburger OR Cheeseburger Crinkle Cut Fries Baked Beans Peach Cups Fresh Fruit Milk	25 3 or 4 Way Chili Spaghetti Diced Onions, Shredded Cheese Oyster Crackers Kidney Beans Glazed Carrots Strawberry or Mixed Berry Cups Fresh Grapes Milk	26 Cheese Pizza OR Pepperoni Pizza Steamed Broccoli Garden Salads Mandarin Oranges Fresh Fruit Milk	27 Mini French Toast OR Mini Waffles Syrup Cup, Scrambled Eggs Smile Fries Veggie Boats with Dip Baked Apples Fresh Fruit Milk	
30 Fiestado Pizza OR Chicken/Cheese Quesadilla Salsa Cup Refried Beans Corn Peach Cups Frozen Sidekicks Milk	31 Chicken Tenders OR Fish Sticks Tater Tots Green Beans Mini Biscuit Peach Cups Fresh Fruit Milk	1 Spaghetti with Meatballs OR Chicken Alfredo Garlic Breadstick Glazed Carrots Garden Salads Pineapple Tidbits Dried Cranberries or Cherries Milk	2 Cornetti Pancakes Sausage Patties Syrup Cup Smile Fries Veggie Boats with Dip Baked Apples Fresh Fruit Milk	3 Grilled Cheese OR Cheesy Flatbread Tomato Soup Garden Salads Oyster Crackers Applesauce Fresh Fruit Milk	

Other Text Here

## PTO News

[Click here to catch up on the details from the latest PTO meeting!](#)

# Ladies Night Out



Join us on  
**January 13th**  
**7:00pm-9:00pm at Flying Axes**  
**100 W 6th Street**  
**Covington, KY 41011**

for some ax throwing, appetizers,  
and a good time with some Cru gals.  
Feel free to bring a friend!

Please send \$50 per axe thrower to the office (attn:  
Brittany Finch) and fill out the registration form by  
12/30. NO LATE REGISTERS.



These shirts will be avail-  
able for purchase soon.  
Check the VBS link on the  
St. Henry Website.

Register here!



**Ladies' Night Out RSVP**



**Moms and sons! Get your tickets today!** The annual Cyclones game! Meet some of your Marvel Super Heroes, on Friday, January 27, game time is 7:30 PM. **Tickets can be purchased today!**



# Bingo

**Weekly and monthly volunteers** are needed to help at bingo. Training is provided for all positions, along with dinner, drinks, and laughter. For more details, contact Ryan Bihl, [watermobihl@yahoo.com](mailto:watermobihl@yahoo.com), or Jamie Powers, [jamielpowers00@gmail.com](mailto:jamielpowers00@gmail.com).

**Effective immediately, anyone under the age 18 will not be permitted in the cafeteria during our bingo sessions.**

8th Grade	7th Grade	6th Grade	5th Grade	4th Grade
January 23 April 3	January 30 April 10	February 6 April 17	February 13 April 24	February 20 May 1
3rd Grade	2nd Grade	1st Grade	Kindergarten	Preschool
December 19 February 27 May 8	December 26 March 6 May 15	January 2 March 13 May 22	January 9 March 20 May 29	January 16 March 27 June 5

**Bingo Volunteer Sign up**

**VIRTUS®**



Anyone who volunteers in our school or parish must be VIRTUS trained and compliant. For current volunteers, the January bulletin is due February 7.

If you are interested in volunteering in our school or parish, there are many opportunities to attend the Protecting God's Children training; visit [VIRTUS.org](http://VIRTUS.org) > drop down to select Covington, KY (Diocese) > select a session to attend and register.

If you have questions or need additional information, reach out to our VIRTUS® coordinator, Kristina Goodridge, 859-342-2551, or email [kgoodridge@sthenryky.com](mailto:kgoodridge@sthenryky.com).

**Anyone who has experienced sexual misconduct by a cleric, employee, religious, or volunteer of the Diocese of Covington is asked to contact Julie Feinauer, Diocesan Victims Assistance Coordinator, 859-392-1515. Professional assistance and pastoral support will be provided in confidentiality and with respect.**



Place	Date	Time
St. William Church Williamstown	Sunday, January 8	1:00 PM
Diocesan Curia Covington	Tuesday, January 10	9:00 AM
Diocesan Curia Covington	Thursday, January 12	6:00 PM
St William Church Williamstown <i>Conducted in Spanish</i>	Sunday, January 15	1:00 PM

## News from St. Henry Parish



Epiphany is an ancient feast celebrating the appearance or manifestation of God to the whole world. Traditionally celebrated on January 6 (still the practice in some places around the world), the liturgical reforms of 1970 moved Epiphany to the second Sunday of January.

Epiphany was once a more prominent celebration; not only was it the preferred day for gift-giving (in imitation of the Magi), but Christians originally celebrated Epiphany as all the manifestations of the divinity of Jesus prior to the start of his public ministry: his birth (with the visit of the Magi), the presentation in the Temple, the finding in the Temple, his baptism in the Jordan, and even the miracle at Cana.

Today, Roman Catholics focus on the manifestation of Christ's birth to the entire world, represented by the magi and the star. (Birthday announcements don't get more public than hanging a new star in the sky.)

**Here are six ways you can celebrate Epiphany with your kids this year.**

---

# May Christ bless the house

A traditional way of blessing your home for Epiphany is to use chalk to write above the home's entrance, for instance, "20 + C + M + B + 19". The numbers, combined, should be the current year.

The letters C, M, B have two meanings. They are the initials of the traditional names of the three magi: Caspar, Melchior, and Balthazar. They also abbreviate the Latin words *Christus mansionem benedicat*, "May Christ bless the house." The "+" signs represent the cross and 20 . . . 19 is the year.

Many parishes have embraced the Epiphany house blessing and give pieces of blessed chalk to everyone after Mass. If your parish doesn't, you can bring your own piece of chalk to Mass and ask Father to bless it, or the head of the household can do it at home.

Because the chalk is blessed, it shouldn't go back into the box with the rest of the regular old chalk. You can put it away to use again next year, or bury it in the yard.



Epiphany is a traditional time for house blessings. At St. Henry, there is a basket of blessed chalk and booklets at the entrances to church. An optional part of the house blessing is writing with chalk above the door of the home, see the booklet for details. If you would like your house blessed by a priest, please call the parish office, 859-727-2035.



# ST. HENRY

DISTRICT HIGH SCHOOL

---

# CRUSADERS

## **Enrollment Events**

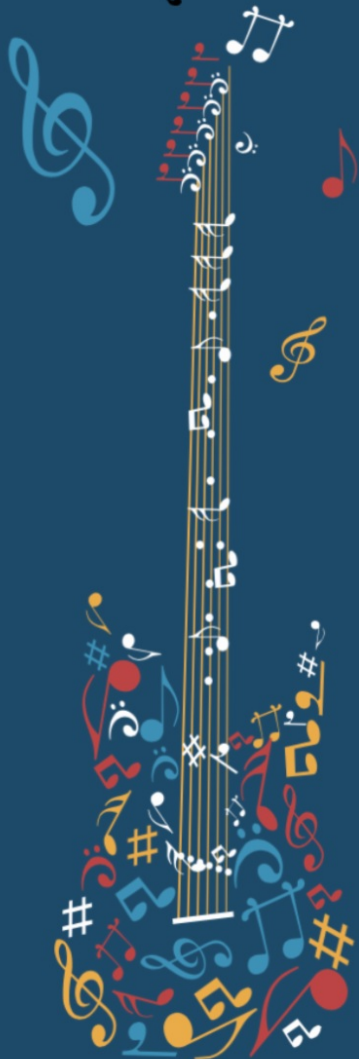
### ***NEW FAMILY INFORMATION NIGHT***

- Thursday, January 12, 2023: newly registered families + prospective families

### ***COURSE SELECTION 1:1 MEETINGS***

- February 2023: registered incoming freshmen + parents

**Connect to SHDHS Online**



**GROUP GUITAR LESSONS** Jan-April 2023  
offered at your school. Grades 6-8th. Use your own guitar or purchase a new guitar thru ISM.

Sign up to secure your spot! Private lessons also available at ISM Lakeside Campus if preferred.

## Immanuel School of Music



Teacher: Jimmy Rinehart

Location: Your School

Cost: \$175 per group class  
(January-April 2023)

Guitar: Extra Cost of \$199 to purchase a new guitar at ISM's special price; **Guitar Orders Due Wednesday, January 4<sup>th</sup>**; may use your own guitar if preferred

For more information or to sign up, visit:  
<https://immanuelumc.org/ism/guitar-classes>  
ISM 859.341.8555

## Upcoming Events

- **January 8:** The Epiphany of the Lord
- **January 8:** Dine to Donate: Behle Street by Sheli, all day
- **January 9:** Beginning of mid-year MAP testing
- **January 10:** Boosters' Meeting, 7:00 PM
- **January 10:** PTO meeting, 7:00 PM
- **January 13:** Lady Crusader Invitational begins
- **January 13:** Ladies' Night Out, Flying Axes, 7:00 PM
- **January 16:** MLK, Jr. Holiday; no school
- **January 25:** Dine to Donate: El Ocho Loco, all day
- **January 27:** Mom/Son @ Cyclone's Game
- **January 29:** SHCS Open House, 1:00-3:00 PM
- **January 30:** Catholic Schools Week
- **February 3:** Noon dismissal, no aftercare
- **February 7:** Dine to Donate: Erlanger Skyline, all day

# Our Parishes

**St. Barbara**  
4042 Turkeyfoot Road  
Erlanger, KY 41018  
859-371-3100  
stbarbaraky.org

**St. Henry**  
3813 Dixie Highway  
Elsmere, KY 41018  
859-727-2035  
sthenrychurch.net

**Cristo Rey**  
25 Cavalier Boulevard  
Florence, KY 41042  
859-538-1175  
micristorey.com

## Join us for Mass!

### St. Barbara

**Fr. John Sterling, Pastor**  
*Chuck Melville, Deacon*

#### Sunday Obligation Masses

4:30 PM Saturday  
9:00 AM & 11:00 AM Sunday

#### Eucharistic Service

10:00 AM Monday

#### Daily Mass

10:00 AM Tuesday-Friday

### St. Henry

**Fr. Joshua Lange, Pastor**  
*Fr. Aby Thampi, Parochial Vicar*  
*Mike Lyman, Deacon*

#### Sunday Obligation Masses

4:00 PM Saturday  
7:30 AM, 9:30 AM, 11:30 AM  
& 7:00 PM Sunday

#### Daily Mass

8:00 AM Monday-Saturday  
8:30 AM **Friday only**

### Cristo Rey

**Fr. Allan Frederick, Pastor**

#### Sunday Obligation Masses

6:00 PM Saturday  
9:00 AM, 11:00 AM &  
1:00 PM Sunday

#### Weekday Mass

6:00 PM Wednesday

## ✝ ST. HENRY CATHOLIC SCHOOL

### Mission Statement

St. Henry Catholic School is a place where we learn, grow, and become Disciples of Christ by embracing the Gospel message. We will work toward our full potential each day in order to demonstrate our respect for the sacrifices made by the entire St. Henry community to ensure our success. We will remain *connected* to God and others, gain *confidence* in our academic, social, and physical abilities, and *contribute* to the community through service and leadership.

## Connect With Us

**St. Henry Catholic School**  
3825 Dixie Highway | Elsmere KY 41018  
859.342.2551  
Dennis Wolff

Visit Us Online

Dennis Wolff | 3825 Dixie Highway, Elsmere, KY 41018 8593422551

[Unsubscribe clageman@sthenrynky.com](mailto:clageman@sthenrynky.com)

[Update Profile](#) | [Constant Contact Data  
Notice](#)

Sent by [bydwolff@sthenrynky.com](mailto:bydwolff@sthenrynky.com) powered by



Try email marketing for free today!