



Crusader Connection

February 25, 2022

2021-2022 School Calendar

Good afternoon,

We hope you've had a great week and are looking forward to a good weekend. As always, lots of things to do listed below, starting with the parish's brews and wild game night this Saturday night.

Our middle of year MAP test is completed and scores have been uploaded to Sycamore. Please reach out to the office or homeroom teacher with questions. Teachers have been working hard in small groups reviewing student data and preparing lessons to help accelerate our children's academic growth.

A quick reminder from the cafeteria: if your child(ren) does not have money in their account, they may not purchase milk or any other item in the lunch line. Please remind them of that and reach out to Mrs. Andrews in the cafeteria with any questions.

It's been a while since we've had a good reminder about parking lot etiquette, so here are some highlights:

- Middle school with siblings are dismissed first, right after 2:30 announcements. Families not picking up middle school students or siblings should not park in the section nearest the school buildings.
- Next are grade KG and one. They are called to come outside at 2:37 or 2:38.
- Finally, grades 2 - 5 are called outside at 2:43.
- Cars should remain not moving until directed by a staff member in the parking lot.
- Cars should follow the direction of the staff member directing traffic.

Overall, the parking lot procedures are mostly good. We usually have a clear lot by 2:48. These few guidelines are designed to keep all of our staff, children and families safe. Please be sure to share this information with babysitters, grandparents or anyone else picking our children up.

I've had some questions about the 2022-23 calendar. Our calendar needs to be approved by the Diocese before being published, but expect our first day to be Monday, August 15 and our last day to not be past Friday, May 26. The calendar

will be shared as soon as possible.

You'll see information below about all the money we've received back from Kroger because families have linked their Kroger card to St. Henry. It's over \$5,000! If you haven't linked your card, please take 2 minutes to do so. It can be done easily on Kroger's app, if you use that. I'd be happy to help anyone link their card.

The funds from Kroger rewards and restaurant nights are a great benefit to our school. Restaurant night funds go directly to buying new items and resources for our makerspace, and after sending several teachers to a tech conference in January, we're going to spend those funds! It's great having new things to try, learn and use, so thank you to everyone that dines to donate and has connected your rewards card to St. Henry.

I hope to see you for brews and wild game Saturday. Have a great weekend.

St. Henry, pray for us!

March After Care Link

COVID19 Update

We've had another week where our cases in school are reflective of the cases in Northern Kentucky. Boone, Campbell and Kenton counties continue to be "in the orange". We didn't have any students or staff test positive this week.

Please continue to communicate with the school if your child(ren) develop any kind of symptoms.

New This Week



Junior High Book Club

Our junior high students started a book club and have read seven books so far this year.

After reading the books, they discuss them and write a blog about each book. Take a look or, better yet, find a new book to read! For more information, please reach out to [Amanda Ackerman](#).

<https://sites.google.com/sthenryny.com/bookclub2021-2022/home>



We Donated \$5045.24 to St. Henry Elementary School in 2021

In all, The Kroger Family of Companies donated over \$45 million to local organizations through Community Rewards, and it's all because of you and other Kroger shoppers. Thanks again for being a Community Rewards member.



THANK YOU!

Have you linked your Kroger Plus Card so that donations come to St. Henry? Last year, we earned \$5,045.24 from Kroger thanks to those who have linked their cards!

To link your card, visit:

<https://www.kroger.com/i/community/community-rewards>. Our school code is TL347.

We're currently at 243 Kroger reward members. It would be great to see that number grow. Be sure to share with your family members; linking your card does not interfere with your fuel points!



ST. HENRY CATHOLIC SCHOOL

Father/Daughter Luau

Friday, March 25 | 7:00-9:30 PM

ST. HENRY SCHOOL GYM

Tickets for our annual father/daughter dance are now live! Please join us for a night out with your little princess. Buy your tickets before March 1 and get the early bird special! Cost includes one ticket for father and student and there is an option to add on more, if needed. We can't wait to see you there!



SHCS Athletic Boosters

The St. Henry Athletic Boosters is looking for parents who want to be a part of the continued growth with our school's athletic program. We are looking to fill the following positions as soon as possible for the 2022-2023 school year:

- Treasurer
- Archery Coach/Director
- Athletics Volunteer Director

No prior experience is necessary and outgoing officers/directors are available to guide you for success. The Boosters meet on the third Tuesday of each month. If interested, please contact Sarah Voelker, sarahvoelker7@gmail.com.



Volunteers Needed!

Sign up here if you're interested in volunteering for this year's Crusader Royale on Saturday, March 5. Whether you buy tickets, volunteer for the whole night, buy tickets and volunteer, it's a great time and we'd love to see you there.

There are many positions, so please consider signing up to help pull off this great event that supports our children!

Crusader Royale Volunteer Sign Up

Tech Tuesdays are Coming!

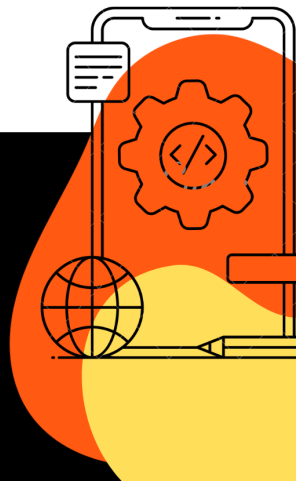
Next week will begin our first Tech Tuesday! The theme is Family Crisis: Too Much Technology?"

IT'S TECH TUESDAY!

**ARE OUR KIDS
CONSUMED WITH
TECHNOLOGY?**

Be sure to check your
email for this week's
Tech Tuesday message
to find out.

Have you seen the
documentary *Childhood 2.0:
The Living Experiment*?
Watch it online for free today!



Information will be sent electronically as well as a paper copy with each student. You can read more about this initiative from the Diocese of Covington [here](#).

EARLY DETECTION SAVES LIVES

15 MINUTES COULD SAVE YOUR LIFE

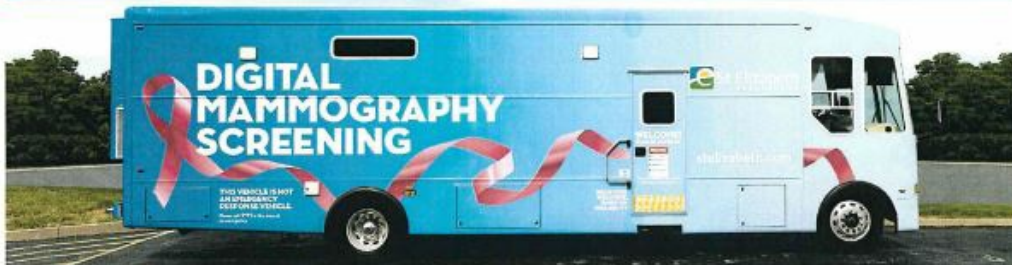
Saint Henry Catholic School

3825 Dixie Highway

Erlanger, Ky 41018

Thursday, March 17

2:00 p.m. - 4:00 p.m.



The St. Elizabeth mobile mammography unit offers state-of-the-art 2-D and 3-D mammography screening. It's quick, easy and covered by most insurance (including Medicare and Medicaid), if you are:

- Age 35 to 40: Baseline Screening
- 40 and Over: Annual Screening

Financial assistance is available to those who qualify.

REGISTER AT (859) 655-7400





Catholics at the Capitol

Bishop John Iffert and the Catholic Conference of Kentucky (CCK) — the public policy arm of Kentucky’s four Catholic bishops — are encouraging Catholics to engage with legislators on important issues being considered during the current 2022 Legislative Session by attending the Diocese of Covington’s Catholics at the Capitol.

Catholics @ The Capitol
Thursday, March 10, 9:00 AM–2:00 PM
State Capitol Building, Room 149, Frankfort

This is a special opportunity exclusively for the people of the Diocese of Covington

Buses will leave from the Curia, Covington, at 7:00 AM and will return at approximately 3:00 PM. There is no cost to attend. For more information, contact Faye Roch at the Diocese of Covington 859-392-1500



DINE TO Donate

3159 Dixie Highway | Erlanger, KY

Tuesday all day long!

DINE IN \ CARRY OUT \ DRIVE THROUGH

Be sure to mention St. Henry when ordering! Thank you for your support!

The advertisement features a red background on the left side with a white and black wavy border. On the left, there is a logo for St. Henry, depicting a knight in armor holding a sword and a shield with the letters 'S' and 'H'. The text "DINE TO Donate" is written in a black, stylized font. On the right, the Skyline Chili logo is displayed, featuring a blue oval with a white skyline and the text "Skyline CHILI" and "It's Skyline Time." Below the logo, the address "3159 Dixie Highway | Erlanger, KY" is listed. The text "Tuesday all day long!" is in a large, bold, black font. Below that, "DINE IN \ CARRY OUT \ DRIVE THROUGH" is written in a smaller, bold, black font. At the bottom, a message in italics says "Be sure to mention St. Henry when ordering! Thank you for your support!".



Bingo

Bingo News

Our President's Day bingo was HUGE: 150 patrons showed up and bought over \$25,000 pull tabs earning \$7,883 for our school despite being short a few workers.

Special thanks to the following volunteers who made the magic happen: Bill Ehrman, Dan Hukle, Anna & Lee Crawford, Jenny Greber, Mark Setters, Chris & Bridget Price, Jim Krallman, Katie Henderson, Julie Martin, Beverly Schumacher, Judy Crowder, Gerri Wenert, Lisa Jacobs, Thomas Ryan, Rhonda Ryan, Julie Nelson, and Ryan Padgett.

Volunteer for one night out per month and you can help St. Henry community at the same time. Enjoy fellowship with community members. Volunteer with a friend and it's a night out. Dinner and drinks are provided.

All bingo volunteers must be VIRTUS trained and compliant.

For more information, contact *Jamie Powers*, 859-814-9998, jamielpowers00@gmail.com, text or call *Ryan Bihl*, 859-760-3325, or click the link below!

Weekly Bingo Volunteer Schedule

February 28: 3rd Grade
March 7: 2nd Grade
March 14: 1st Grade
March 21: Kindergarten
March 28: Preschool
April 4: 8th Grade
April 11: 7th Grade
April 18: 6th Grade
April 25: 5th Grade
May 2: 4th Grade
May 9: 3rd Grade
May 16: 2nd Grade
May 23: 1st Grade
May 30: Kindergarten
June 6: Preschool

Bingo Volunteer Sign up

SHDHS Volleyball Clinic



SHDHS Volleyball Spring Clinic 2022

The clinic will focus on fundamental areas of the game passing, setting, serving, defense, and will also include team and game situations. This will be done in a fun, exciting environment with all participants receiving Crusader volleyball spiritwear.

When: Beginning on Monday, March 7, 2022, and finish on Monday, March 28, 2020 (March 7,14,21,28)

Location: St. Henry District High School

Conducted by SHDHS Head Coach Maureen Kaiser & Assistant Coach Shawn Schwarz along with SHDHS volleyball team members


TWO SESSIONS DIVIDED BY GRADE LEVEL

- **AGE:** Any girl Pre School-2nd grade **TIME:** 5:30-6:30 PM **COST:** \$80
- **AGE:** Any girl currently in grades 3-7 **TIME:** 6:45-8:00 PM **COST:** \$90

\$10 discount for registering 2 or more from the same family

[Click to register for the clinic.](#)

CAFETERIA

					
MONDAY	TUESDAY	WEDNESDAY	THURSDAY	FRIDAY	
28	1 Cheese Coney OR Hot Dog Roasted Potatoes Onions, Shredded Cheese Carrots and Celery with Dip Diced Peas Fresh Fruit Milk	2 Gilled Cheese Tomato Soup Oyster Crackers Garden Salad Applesauce Fresh Fruit Milk ASH WEDNESDAY	3 Chicken Nuggets Mac & Cheese Baked Beans Veggie Boat with Dip Mandarin Oranges Fresh Fruit Milk	4 Pizza Crunchners Marinara Sauce Green Beans Garden Salad Pineapple Tidbits Fresh Fruit Milk	Alternate Meal Options <i>*Options may vary by day*</i> <i>*Milk offered with all meals*</i> <ul style="list-style-type: none"> • Hummus Grab-n-Go Hummus cup, Tostito chips, cheese stick, carrots and dip, fruit cup • Protein Pack Hardboiled egg, cheese stick, jungle crackers, carrots and dip, fruit cup Meat options not offered on Fridays. Menu subject to change by product availability. Extras (not included in the free lunch): Milk: 50¢ Water: \$1.25 Small juice: 50¢ Bagged snacks: 75¢ Pudding cup: 75¢ Rice Krispie Treat: 75¢
7	Mini Corn Dogs Mac & Cheese Green Beans Broccoli with Dip Frozen Sidekick Diced Peaches Fresh Fruit Milk	9 Turkey Roast Mashed Potatoes with Gravy Dinner Roll Green Beans Garden Salad Pineapple Tidbits Fresh Fruit Milk	10 3- or 4-Way Chili Spaghetti Kidney Beans, Diced Onions Oyster Crackers Glazed Carrots, Veggie Boat Mandarin Oranges Fresh Fruit Milk	11 Big Daddy's Cheese Pizza OR Cheese Breadstick w/Marinara Steamed Broccoli Garden Salad Applesauce Fresh Fruit Milk	
14	Chicken Tenders Roasted Potatoes Green Beans Diced Peaches Frozen Sidekick Fresh Fruit Milk	16 Spaghetti with Meatballs Garlic Breadstick Glazed Carrots Garden Salad Pineapple Tidbits Fresh Fruit Milk	17 Corfetti Pancakes Sausage Link Smile Fries Veggie Boat Baked Apples Fresh Fruit Milk	18 Noon Dismissal No Lunch Served	
21	Hamburger/Cheeseburger Waffle Fries Baked Beans Diced Peaches Frozen Sidekick Fresh Fruit Milk	23 Rotini with Meatsauce Garlic Bread Stick Garden Salad Steamed Broccoli Pineapple Tidbits Fresh Fruit Milk	24 Chicken Nuggets Mac & Cheese Green Beans Veggie Boat Mandarin Oranges Fresh Fruit Milk	25 French Toast Scrambled Eggs Salsa Veggie Boat Baked Apples Fresh Fruit Milk	
28	Sloppy Joe on Bun Waffle Fries Green Beans Diced Peaches Frozen Sidekick Fresh Fruit Milk	30 Roast Beef with Gravy Mashed Potatoes Dinner Roll Corn Pineapple Tidbits Fresh Fruit Milk	31 Chicken Patty on Bun Potato Wedges Baked Beans Mandarin Oranges Fresh Fruit Milk	1	

THIS INSTITUTION IS AN EQUAL OPPORTUNITY PROVIDER

Upcoming Events

- **February 26:** Brews & Wild Game Men's Night
- **March 1:** Dine to Donate: Erlanger Skyline
- **March 2:** Ash Wednesday/Lent begins
- **March 5:** Crusader Royale
- **March 6:** First Sunday of Lent
- **March 11:** End of Q3, regular school day
- **March 18:** Noon dismissal, no after care available
- **March 18:** Moana (middle school musical) weekend

- **March 22:** Dine to Donate: Carrabas
- **April 5:** Dine to Donate: Erlanger Skyline
- **April 10:** Palm Sunday of the Lord's Passion
- **April 13:** Passion Play
- **April 14:** Holy Thursday
- **April 15:** Good Friday
- **April 17:** Easter Sunday

Our Parishes

St. Henry

St. Barbara

Cristo Rey

ST. HENRY CATHOLIC SCHOOL

Mission Statement

St. Henry Catholic School is a place where we learn, grow, and become Disciples of Christ by embracing the Gospel message. We will work toward our full potential each day in order to demonstrate our respect for the sacrifices made by the entire St. Henry community to ensure our success. We will remain *connected* to God and others, gain *confidence* in our academic, social, and physical abilities, and *contribute* to the community through service and leadership.

Connect With Us

St. Henry Catholic School
3825 Dixie Highway | Elsmere KY 41018
859.342.2551
[Dennis Wolff](#)

Visit Us Online

